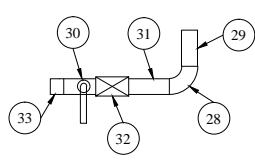
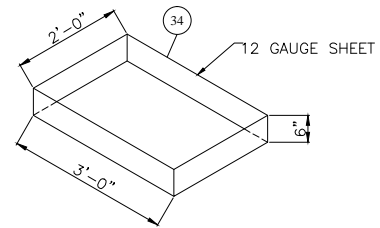


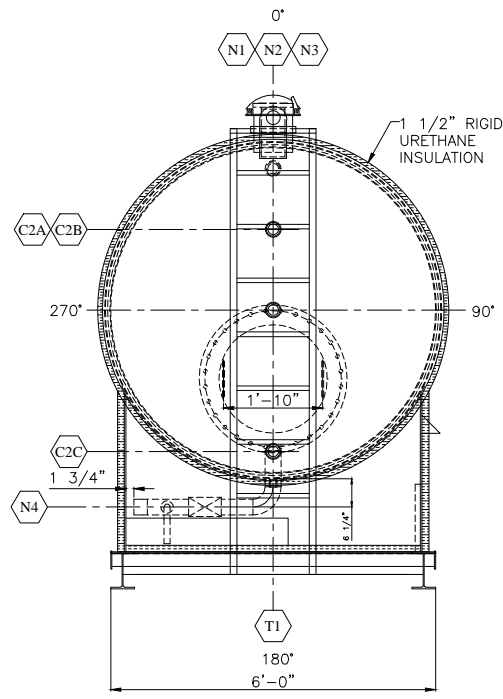
LADDER DETAILS



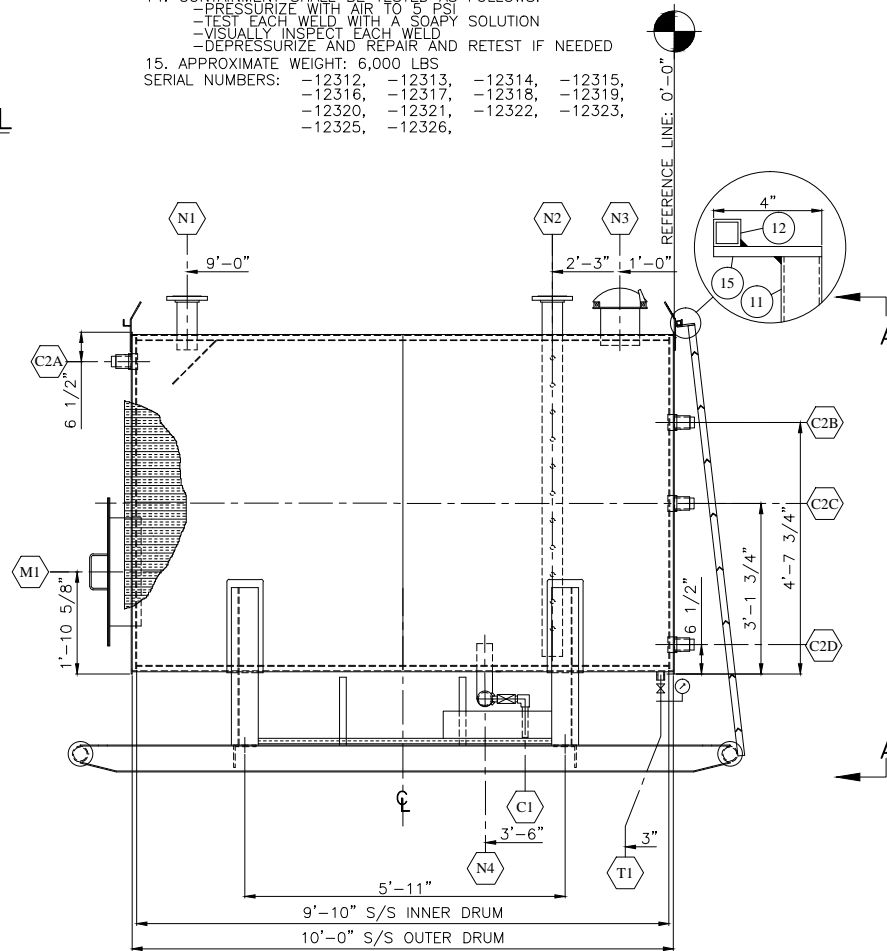
DRAIN DETAIL



CONTAINMENT TRAY DETAIL



ORIENTATION VIEW A-A



ELEVATION VIEW

NOZZLE SCHEDULE

MARK	NO. REQ'D	DESCRIPTION	SIZE	ANSI	TYPE	PROJECTION		WELD DETAIL	WELD			REPAD	BILL OF MATERIALS ITEM NUMBER
						INSIDE	OUTSIDE		A	B	C		
N1	1	INLET	4"	150#	RFSO	2"	8 1/2"	1.5	1/4	1/4	1/4	-	18,19,21,75
N2	1	GAUGE	4"	150#	RFSO	SHOWN	8 1/2"	1.5	1/4	1/4	1/4	-	18,20,22,23,24,25,26
N3	1	THIEF	8"	API	API50	1"	6"	5	1/4	1/4	1/4	-	27
N4	1	PUMPOUT	3"	150#	RFSO	6"	SHOWN	1.5	1/4	1/4	1/4	-	28 - 37
C1	1	DRAIN	1"	3000#	TOL	-	-	4	1/4	-	-	-	41,42,43,44,45,46
C2	4	SPARE	2"	3000#	CPLG	1/4"	-	2	1/4	1/4	-	-	47,72,73
T1	1	TEST	1"	3000#	CPLG	-	-	3	1/4	-	-	-	48,49
M1	1	MANWAY	24"	API	API50	1"	5"	5	1/4	1/4	1/4	-	50,51,52,53,54,55,56

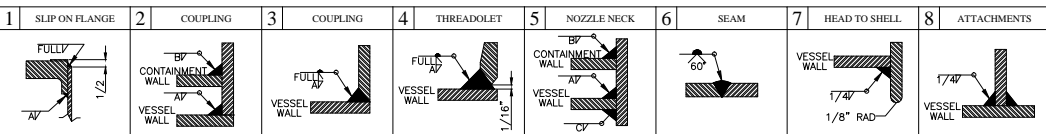
GENERAL NOTES

- SHELL AND HEAD MATERIAL: SA-36
 - ALL FLANGE MATERIAL: SA-105-N
 - ALL PIPE MATERIAL: SA-106-N
 - ALL BOLTING MATERIAL: SA-193-B7/SA-194-2H
 - EXTERNAL SANDBLAST TO SSPC-SP-6 (COMMERCIAL)
 - EXTERNAL FINISH: PRIME BLACK
 - PAINT ALL EXPOSED SURFACES WHITE ENAMEL
 - INTERNAL SANDBLAST TO SSPC-SP-10 (NEAR WHITE)
 - INTERNAL COATING: 12-18 MILS DEVCO 253 EPOXY
 - CATADYNE HEATER IS c/w REGULATOR, TEMPERATURE CONTROLLER, HOSE AND CABLE 110V NATURAL GAS WIRED TO CLASS 1, DIV. 1
 - ALL OPEN PIPE ENDS SHALL HAVE A 1/8" RADIUS
 - 1 1/2" RIGID URETHANE INSULATION WITH ALUMINUM CLADDING
 - ALL OPENINGS SHALL BE COVERED PRIOR TO SHIPPING
 - ALL WELDING SHALL BE AS PER CSA W47.1-92 USING GAS METAL ARC WELDING WITH ER480S-B FILLER METAL
 - CONTAINMENT SHALL BE TESTED AS FOLLOWS:
 - PRESSURIZE WITH AIR TO 5 PSI
 - TEST EACH WELD WITH A SOAPY SOLUTION
 - VISUALLY INSPECT EACH WELD
 - DEPRESSURIZE AND REPAIR AND RETEST IF NEEDED
 - APPROXIMATE WEIGHT: 6,000 LBS
- SERIAL NUMBERS: -12312, -12313, -12314, -12315, -12316, -12317, -12318, -12319, -12320, -12321, -12322, -12323, -12325, -12326

BILL OF MATERIALS

ITEM	REQ'D	PART	DESCRIPTION	MATERIAL	WEIGHT
1	2	SHELL	3/16" THK x 60" W ROLL TO 72" ID x 18'-11 3/8" LG (TRIM 2" OFF ONE)	SA-36	1440#
2	2	HEAD	3/16" THK x 6'-1 3/8" OD	SA-36	450#
3	2	SHELL	3/16" THK x 60" W ROLL TO 74 3/8" ID x 19'-5 1/2" LG	SA-36	1500#
4	2	HEAD	3/16" THK x 6'-3 3/4" OD	SA-36	482#
5	2	LIFT LUG	3/8" THK LIFTING LUG	SA-36	6#
6	1	SKID	50 BBL SKID (SEE SHEET #2)	-	600#
7	2	SADDLE	50 BBL SADDLE (SEE SHEET #2)	SA-36	375#
9	1	HEATER	6" x 24" CATADYNE HEATER (SEE CATADYNE DWG)	-	-
10	1	VENT	GALV. DRYER VENT, MOUNT SAME SIDE AS HEATER NEAR TOP	-	-
11	2	LADDER	1 1/2" x 1 1/2" x 1 1/2" x 0.100" WALL HSS x 96" LG	350W	30#
12	1	LADDER	1" x 1" x .125" WALL HSS x 19 1/2" LG	350W	2#
13	8	LADDER	1" x 1" x .125" ANGLE x 16" LG	SA-36	9#
14	2	LADDER	1 1/2" x 1 1/2" X .188" ANGLE x 10" LG	SA-36	2#
15	2	LADDER	3/8" x 2" FLAT BAR x 4" LG	SA-36	2#
16	2	LADDER	1 1/2" SQUARE CLUTHE CAP	-	-
17	2	LADDER	1" SQUARE CLUTHE CAP	-	-
18	2	N1,N2	4" x 150# RFSO FLG	SA-105-N	26#
19	1	N1	4" PIPE SCH STD x 11 3/8" LG	SA-106-B	10#
20	1	N2	4" PIPE SCH STD x 79 1/8" LG w/ HOLES (SEE DOWNCOMER DWG)	SA-106-B	71#
21	1	N1	3" x 150# FLANGE PROTECTOR	POLY	-
22	1	N2	4" x 150# RF BLIND	SA-105-N	17#
23	1	N2	4" x 150# RF FLEXITALLIC GASKET	304SS	-
24	8	N2	5/8" DIA x 3 1/2" LG STUD	SA-193-B7M	-
25	16	N2	5/8" DIA NUT	SA-194-2HM	-
27	1	N3	8" THEIF HATCH	-	-
28	1	N4	3" x 90° LR BW ELBOW SCH STD	SA-234-WPB	5#
29	1	N4	3" PIPE SCH STD x 8" LG	SA-106-B	5#
30	1	N4	3" x 8" LG NIPPLE SCH STD	SA-106-B	4#
31	1	N4	3" x 10" LG NIPPLE SCH STD (CUT THRD OFF ONE END)	SA-106-B	5#
32	1	N4	3" x 150# SE RP THRD BALON BALL VALVE	SA-105-N	-
33	1	N4	3" MALE/FEMALE ALUMINUM CAMLOCK	-	-
34	1	N4	12 GAUGE 36" x 24" CONTAINMENT TRAY	-	-
41	1	C1	1" x 3000# TOL	SA-105-N	1#
42	1	C1	1" x 2" LG NIPPLE SCH XH	SA-106-B	1#
43	1	C1	1" x CLOSE NIPPLE SCH XH	SA-106-B	1#
44	1	C1	1" x 2000# SE BALL VALVE	SA-105-N	-
45	1	C1	1" x 2000# 90° THRD ELBOW	SA-105-N	-
46	1	C1	1" PIPE SCH XH x 7" LG TOE	SA-106-B	2#
47	4	C2	2" x 3000# THRD FULL CPLG	SA-105-N	1#
48	1	T1	1" x 3000# FULL CPLG	SA-105-N	1#
49	1	T1	VACUUM GAUGE ASSEMBLY (SEE VACASSY - AG DWG)	-	-
50	1	M1	1/4" THK x 32 3/4" OD x 24" ID SHOP FLANGE	SA-36	29#
51	1	M1	24" API-650 (FULL FACE) GASKET	-	-
52	1	M1	1/4" THK x 32 3/4" OD SHOP BLIND FLG	SA-36	61#
53	1	M1	24" PIPE SCH 10 x 7" LG	SA-106-B	37#
54	28	M1	3/4" DIA x 1 1/2" LG BOLT	GR. 5	-
55	28	M1	3/4" DIA NUT	GR. 5	-
56	2	M1	3/8" HRR x 1'-4" LG MANWAY HANDLE (SEE DETAIL)	SA-36	2#
57	1	DOOR	ALUMINUM DOOR FRAME x 10'-0" LG	-	-
58	1	DOOR	C-CHANNEL x 10'-0" LG	-	-
59	1	DOOR	BAREL BOLT	-	-
60	2	DOOR	HINGES	-	-
61	1	DOOR	LATCH	-	-
62	1	DOOR	1" x 2" ALUMINUM ANGLE x 32" LG	-	-
63	1	DOOR	D-HANDLE	-	-
64	5	INSUL	1 1/2" x 10'-4" LG SHT RIGID URETH,CORR & STUCCO EMOSS ALUM ONE SIDE (CURFS)	-	-
65	3	INSUL	1 1/2" x 45" COV x 77" LG SHT RIGID URETH, CORR & STUCCO EMOSS ALUM BOTH SIDES	-	-
66	60 FT	INSUL	SEA "L" FLASHING	-	-
67	8 FT	INSUL	SEA "Z" FLASHING	-	-
68	250	INSUL	SCREWS - #8 - 1/2" STAINLESS STEEL	-	-
69	1	INSUL	ALUMINUM SILICONE CAULK	-	-
70	2	INSUL	1 1/2" x 12'-6" LG SHT RIGID URETH,CORR & STUCCO EMOSS ALUM ONE SIDE (NO CURFS)	-	-
72	4	C2	3" SCH STD PIPE X 2" LONG	SA-106-B	-
73	4	C2	2" 150# HEX HEAD PLUG	SA-105-N	-
74	1	DECAL	10" x 18" BILTON WELDING DECAL	-	-
75	1	N1	3/16" DEFLECTOR PLATE	SA-36	-
76	1	SCRUBBER	FLO-DRI SCRUBBER MODEL G-25A (SEE DWG# A279-3)	-	-

FILE PATH: P:\CAD\STOCK TANKS\DRAIN TANKS\50BBLDRRAINTANK



REV. NO.	DATE	REVISION	BY	APP'D
0	11/22/00	STANDARD DRAWING	DSG	JLM
1	02/22/01	REVISED STANDARD DRAWING	JMB	JLM
2	02/23/01	ADDED DEFLECTOR PLATE TO INLET	JMB	JLM
3	03/12/01	ADDED 2" EXTENSIONS TO 2" SPARE CONNECTIONS	JMB	JLM
4	03/23/01	ISSUED FOR FABRICATION	JMB	JLM
5	06/06/01	FINAL DRAWING	JMB	JLM
6				
7				

BOX 6106
3704 58 AVE.
INNISFAIL, AB
CANADA
403-227-7799
1-888-227-4923
Welding & Manufacturing Ltd. FAX 227-7796

BP CANADA ENERGY

50 BBL DOUBLE WALL DRAIN TANK
72" ID x 10'-0" S/S c/w CATADYNE HEATER AND INSULATION

DATE: 11/22/00
SCALE: N.T.S.
DRAWN BY: DSG
PURCHASE ORDER:
LOCATION:
PART NO.:

SHEET: 1 OF 3

JOB NO.:
A279

DRAWING NO.:
A279-1

SIZE: D

REV.: 5