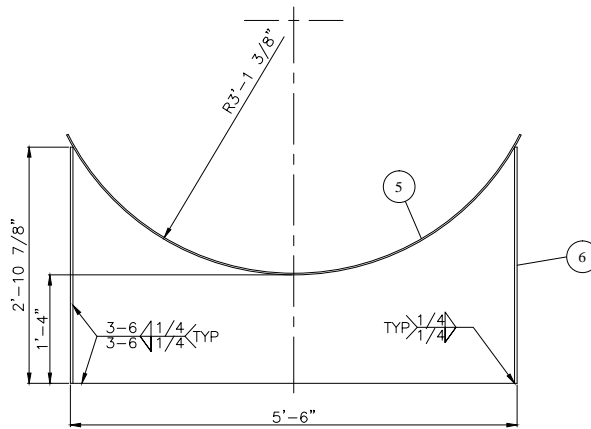
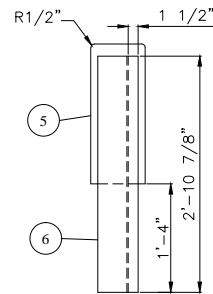
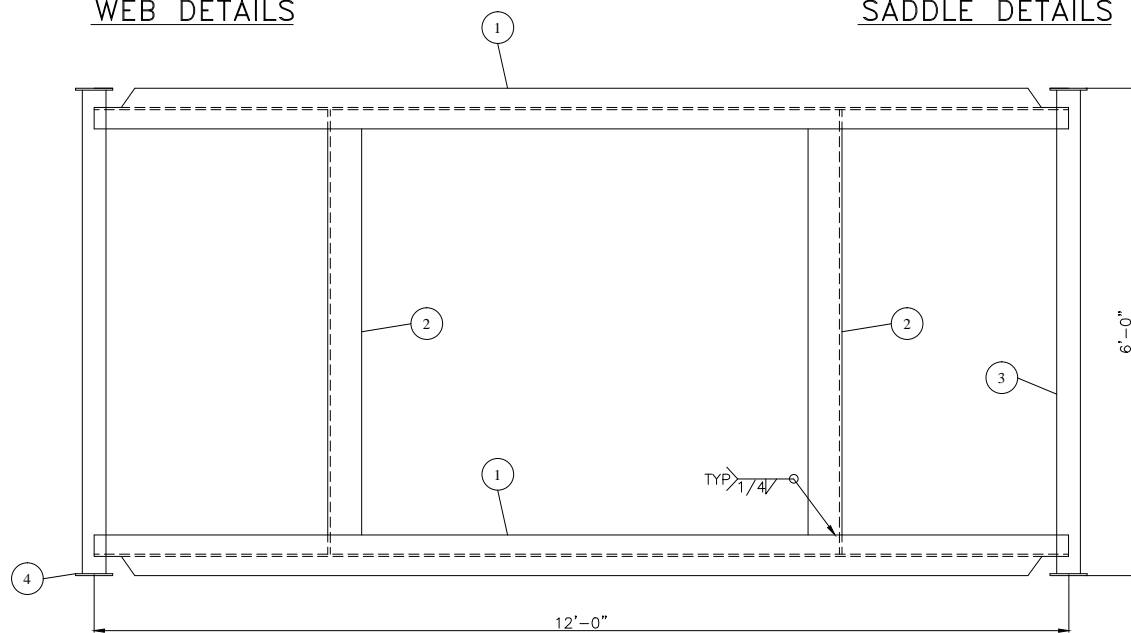


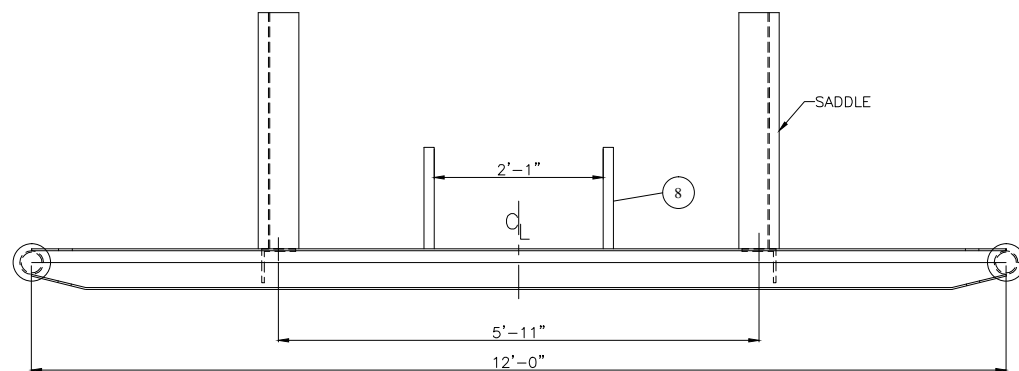
WEB DETAILS



SADDLE DETAILS



TOP VIEW

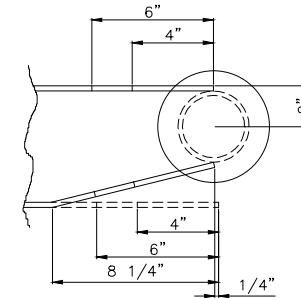


ELEVATION VIEW

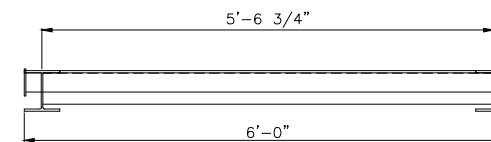
BILL OF MATERIALS					
ITEM	REQ'D	PART	DESCRIPTION	MATERIAL	WEIGHT
1	2	RUNNER	WF6@15# x 12'-0" LG (ROUGH CUT TO 144 1/2")	WF6@15#	360#
2	2	CROSSMEM	5" x 5" x 3/8" ANGLE x 5'-5 11/16" LG	SA-36	133#
3	2	PULLCAP	3" STD PIPE x 5'-11 1/2" LG	SA-106-B	90#
4	4	PULLCAP	1/4" THK x 5 1/2" OD	SA-36	5#
5	2	SADDLE	1/4" x 8" FLAT BAR x 8'-0" LG ROLL TO 74 3/4" ID	SA-36	109#
6	4	SADDLE	3/8" x 6" FLATBAR x 2'-10 7/8" LG	SA-36	89#
7	2	SADDLE	3/16" THK x 2'-10 7/8" W x 5'-5 1/4" LG (SEE DETAIL)	SA-36	177#
8	2	HEATER	1 1/2" x 1 1/2" x 0.100" WALL HSS x 15" LG	350W	5#

GENERAL NOTES

- APPROXIMATE WEIGHT: 970 LBS (SADDLE AND SKID ONLY)
- ALL WELDING SHALL BE AS PER CSA W47.1-92 USING GAS METAL ARC WELDING WITH ER480S-6 FILLER METAL OR SUBMERGED METAL ARC WELDING WITH E48018-1 FILLER METAL



COPE DETAIL



END VIEW

REV. NO.	DATE	REVISION	BY	APP'D
0	10/19/00	STANDARD DRAWING	DSG	JLM
1	06/06/01	FINAL DRAWING	JMB	JLM
2				
3				
4				
5				
6				
7				

BILTON
 Welding & Manufacturing Ltd.
 BOX 6106
 3704 58 AVE.
 INNISFAIL, AB
 CANADA
 403-227-7799
 1-888-227-4923
 FAX 227-7796

BP CANADA ENERGY
 50 BBL ABOVE GROUND DOUBLE WALL DRAINTANK
 SKID DETAILS

DATE: 10/19/00
 SCALE: N.T.S.
 DRAWN BY: DSG
 PURCHASE ORDER:
 LOCATION:
 PART NO.:

SHEET: 2 OF 3
 JOB NO.:
A279
 DRAWING NO.:
A279-2

SIZE: D
 REV.: 1