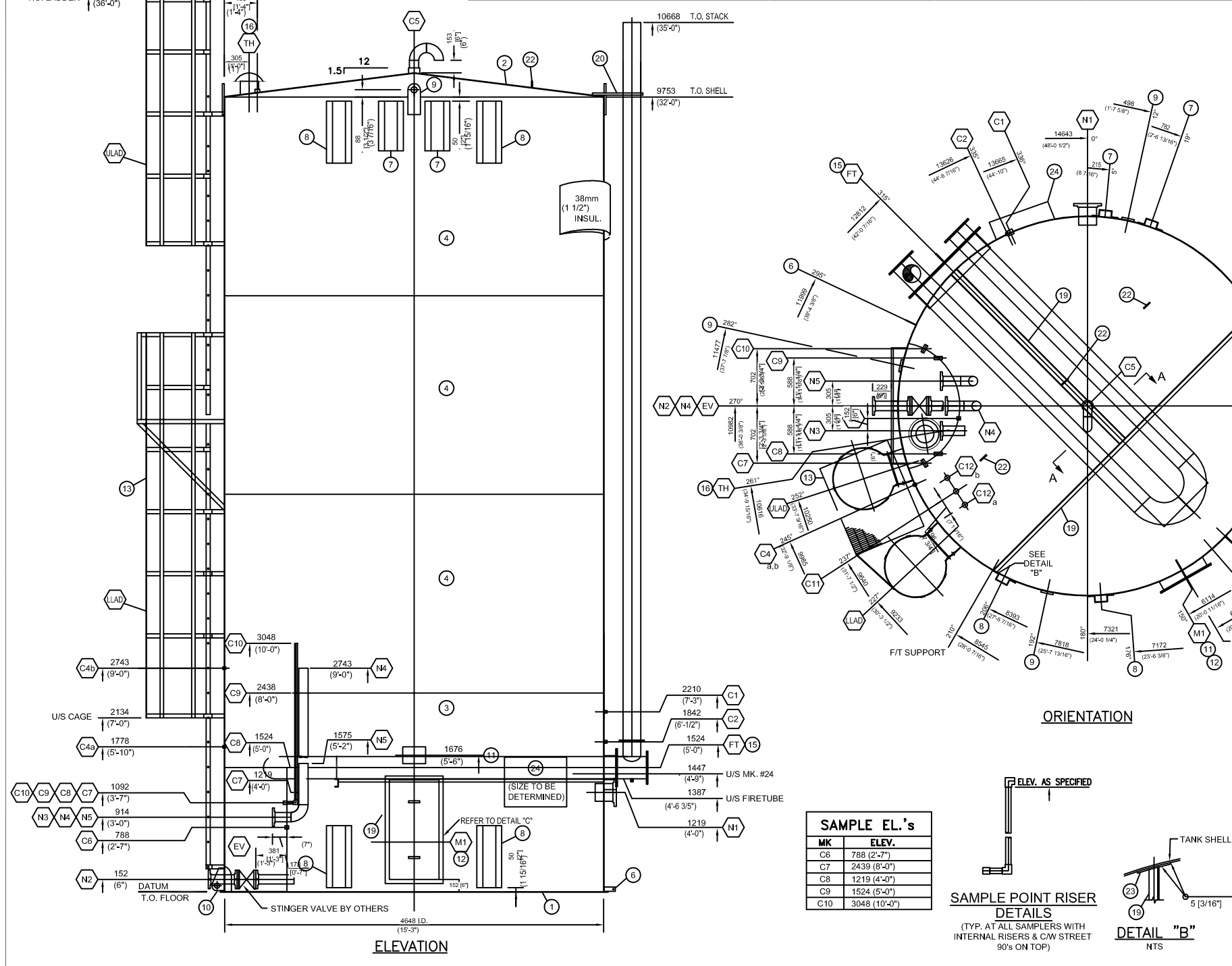


NOZZLE SCHEDULE										
MK#	QTY	SIZE	SCH	CLASS	TYPE	O.S.P.	I.S.P.	REPAD OD x ID	SERVICE/DESCRIPTION	ELEVATION
N1	1	219 (8")	40	150	RFSO	152 (6")	102 (4")	485x222	OVERFLOW	1219 (4'-0")
N2	1	114 (4")	160	150	RFSO	381 (15")	51 (2")	-	STINGER C/W GATE VALVE/TRH FLG@PLUG	152 (6")
N3	1	114 (4")	40	150	RFSO	178 (7")	102 (4")	-	SPARE C/W GATE VALVE	914 (3'-0")
N4	1	114 (4")	40	150	RFSO	178 (7")	51 (2")	-	WATER OUTLET c/w INT. RISER/GATE VALVE	914 (3'-0")
N5	1	114 (4")	40	150	RFSO	178 (7")	51 (2")	-	OIL OUTLET c/w INT. RISER/GATE VALVE	914 (3'-0")
C1	1	51 (2")	-	3000	FULL CPLG	FULL	-	-	LOW LEVEL SHUT DOWN	2210 (7'-3")
C2	1	19 (3/4")	-	3000	FULL CPLG	HALF	-	-	GAS TREE CONN.	1842 (6'-1/2")
C4a	1	19 (3/4")	-	3000	FULL CPLG	HALF	-	-	TEMP GAUGE	1778 (5'-10")
C4b	1	19 (3/4")	-	3000	FULL CPLG	HALF	-	-	TEMP GAUGE	2743 (9'-0")
C5	1	102 (4")	-	3000	FULL CPLG	HALF	-	-	VENT C/W GOOSENECK	-
C6	1	25 (1")	-	3000	FULL CPLG	HALF	-	-	SAMPLE CONN.	-
C7	1	25 (1")	-	3000	FULL CPLG	HALF	-	-	SAMPLE CONN. c/w REM. INT. C.S. SAMPLE LINE TO 4'	1092 (3'-7")
C8	1	25 (1")	-	3000	FULL CPLG	HALF	-	-	SAMPLE CONN. c/w REM. INT. C.S. SAMPLE LINE TO 6'	1092 (3'-7")
C9	1	25 (1")	-	3000	FULL CPLG	HALF	-	-	SAMPLE CONN. c/w REM. INT. C.S. SAMPLE LINE TO 8'	1092 (3'-7")
C10	1	25 (1")	-	3000	FULL CPLG	HALF	-	-	SAMPLE CONN. c/w REM. INT. C.S. SAMPLE LINE TO 10'	1092 (3'-7")
C11	1	38 (1 1/2")	-	3000	FULL CPLG	HALF	-	-	LEVEL INDICATOR	-
C12a,b	2	38 (1 1/2")	-	3000	FULL CPLG	HALF	-	-	FLOAT GUIDE WIRES	-
FT	1	273 (10")	-	-	FAB'D	152 (6")	6 (1/4")	-	FIRE TUBE	1524 (5'-0")
TH	1	219 (8")	40	FAB'D	FAB'D	203 (8")	6 (1/4")	-	THIEF HATCH	-
EV	1	1524x1829 (5'x6')	N/A	N/A	N/A	N/A	6 (1/4")	-	ENVIROVAULT c/w LOCKABLE DOORS	-
M1	1	610x1220 (2'x4')	-	FAB'D	FAB'D	SEE DET. "C"	SEE DET. "C"	-	SHELL MANWAY	-



BILL OF MATERIAL				
MARK	QTY	COMPONENT DESCRIPTION	MATERIAL	WT
1	1	FLOOR: PLATE 6.35mm (1/4") THK. x 4763mm (15'-7 1/2") DIA.	G40.21-44W	
2	1	ROOF: PLATE 4.76mm (3/16") THK. x 4648mm (15'-4") DIA.	G40.21-44W	
3	1	SHELL: PLATE 6.35mm (1/4") THK. x 2438mm (8'-0") x 14623mm (47'-11 1/16") LG.	G40.21-44W	
4	3	SHELL: PLATE 4.76mm (3/16") THK. x 2438mm (8'-0") x 14618mm (47'-11 3/4") LG.	G40.21-44W	
6	1	GROUNDING LUG ATMI-STD-002 (REFER TO DWG#ATMI-STD-100-01)	G40.21-44W	
7	2	INSULATION PROTECTOR PADS ATMI-STD-005 (REFER TO DWG#ATMI-STD-100-01)	G40.21-44W	
8	4	HAULING PADS ATMI-STD-004 (REFER TO DWG#ATMI-STD-100-01)	G40.21-44W	
9	4	LIFTING LUGS ATMI-STD-001 (REFER TO DWG#ATMI-STD-100-01)	G40.21-44W	
10	1	TAILING LUG ATMI-STD-003 (REFER TO DWG#ATMI-STD-100-01)	G40.21-44W	
11	1	NAMEPLATE C/W BRACKET ATMI-STD-006 (REFER TO DWG#ATMI-STD-100-01)	G40.21-44W	
12	1	SHELL MANWAY c/w 2'-0" x 4'-0" COVER ATMI-STD-009 (REFER TO DWG#ATMI-STD-100-01)	G40.21-44W	
13	1	LADDER ASSEMBLY - UPPER/LOWER LADDER (ATMI-STD-102-01) c/w FALL ARREST SYSTEM	G40.21-44W	
14				
15	1	FIRE TUBE REMOVABLE U-TUBE 273.1mmØ (10") SCH. STD. -219.1mmØ STACK (ATMI-STD-101-02)	G40.21-44W	
16	1	THIEF HATCH NOZZLE c/w HAWKEYE T-200 THIEF HATCH SET @ 8 oz. PRESSURE & 0.4 oz. VACUUM (REFER TO ATMI-STD-008)		
17	1	FIRE TUBE HOLD DOWN BAR (3/4" BENT ROD)	G40.21-44W	
18	1	LEVEL INDICATOR 3M ARM GAUGING SYSTEM c/w FLOAT, GALVANIZED METAL BOARD 0-30 RED (CUBIC METERS) & HARDWARE		
19	1	C100# CHANNEL FIRE TUBE SUPPORT	G40.21-44W	
20	1	STACK BRACKET FOR 219.1mmØ (8") STACK (ATMI-STD-101-02)	G40.21-44W	
22	3	TANK ROOF SAFETY HARNESS LUG REFER TO (REFER TO ATMI-STD-007)	G40.21-44W	
23	2	FIRE TUBE SUPPORT REPAD 4.76mm (3/16") THK. x 152mm (6") DIA.	G40.21-44W	
24	1	BURNER BOX 762mm (30") x 610mm (24") x 254mm (10") FOLD DOWN	G40.21-44W	

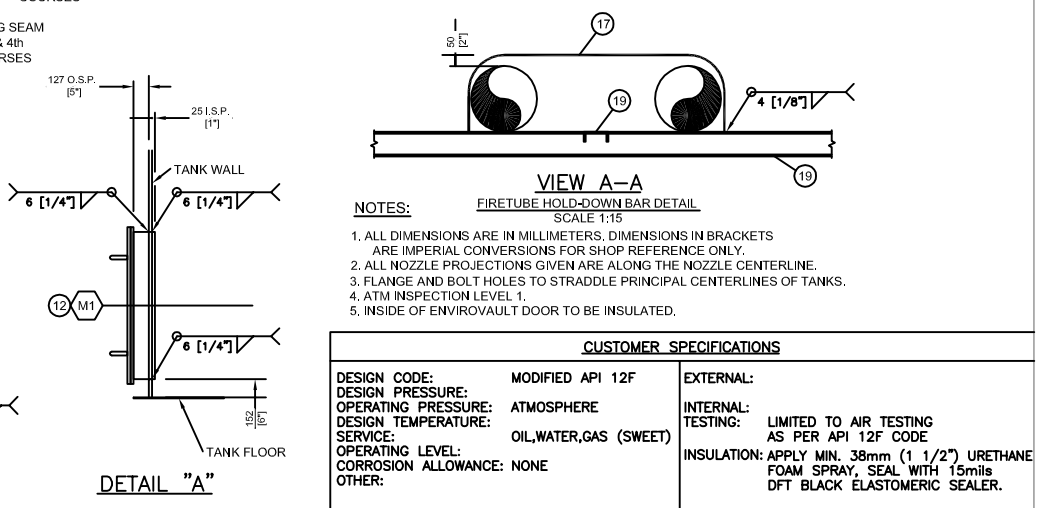
MANUFACTURER'S NOTES:

- Vault Dress-Up
- 4" GATE VALVES
- CAM & CAP
- X SCREEN
- 2" DRAW UP ON N3
- 0-30 RED GAUGE BOARD
- NO BLIND FLANGES
- 12 $\frac{3}{4}$ " BCD BURNER FLANGE

SHIPPING NOTES:

- COVER ALL OPEN NOZZLES / COUPLINGS
- SHIP LOOSE ITEMS
- STD DOOR BOLT/GASKET KIT
- 4" THREADED GOOSE NECK
- SPLIT LADDER

TOTAL WEIGHT:



CAUTION : READ BEFORE CONSTRUCTION															
REFERENCE DRAWINGS	DWG. NO.	NO.	DATE	PROJECT DESCRIPTION	EWR No.	EPCM Co.	EPCM No.	ENG.	ISSUE STAGE	DATE	BY	CHKD.	APPD.	PERMIT STAMP	ENGINEER'S STAMP
STANDARD DETAILS	-	0	-	ISSUED FOR CONSTRUCTION	-	-	-	-	Prelim.	-	-	-	-		
									Approval	-	-	-	-		
									Tender	-	-	-	-		
									DISCUSSION	-	-	-	-		
									As-Built	-	-	-	-		

DESIGN CODE: MODIFIED API 12F			EXTERNAL:
DESIGN PRESSURE:	ATMOSPHERE	INTERNAL TESTING:	LIMITED TO AIR TESTING AS PER API 12F CODE
OPERATING PRESSURE:	ATMOSPHERE	INSULATION:	APPLY MIN. 38mm (1 1/2") URETHANE FOAM SPRAY, SEAL WITH 15mils DFT BLACK ELASTOMERIC SEALER.
DESIGN TEMPERATURE:	OIL, WATER, GAS (SWEET)	OTHER:	
SERVICE:			
OPERATING LEVEL:			
CORROSION ALLOWANCE:	NONE		

CALROC INDUSTRIES EPCM CO. _____ EPNO. _____		
LSD _____ DATE 2012-09-26 SCALE 1:30 (A1 Size)	TITLE 1000 bbl SALES TANK C/W SPLIT LADDER ORIENTATION & ELEVATION	
AREA _____	FILE NO. CALROC-1000-CALR-02B	