

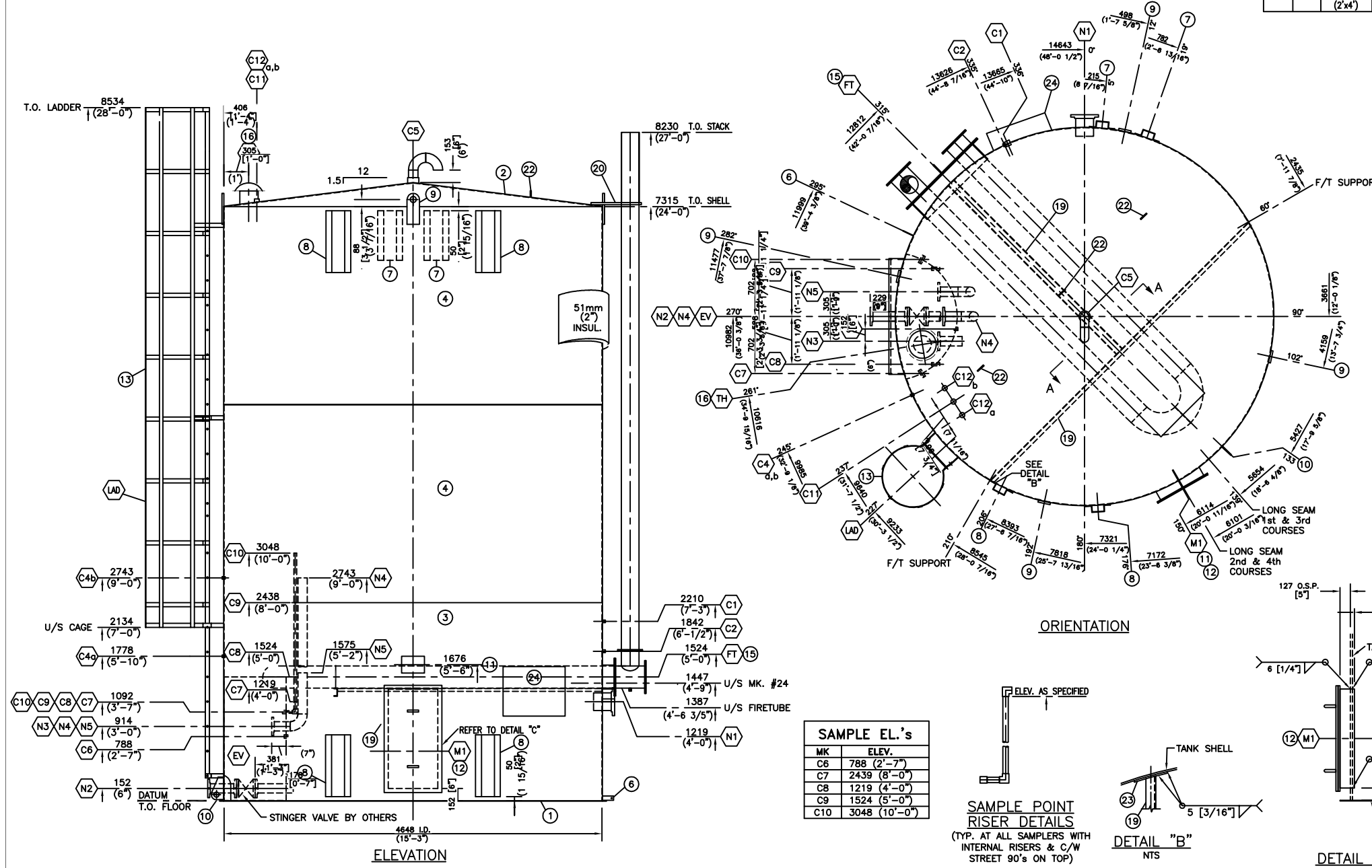
NOZZLE SCHEDULE										
MK#	QTY	SIZE	SCH	CLASS	TYPE	O.S.P.	I.S.P.	REPAD OD x ID	SERVICE/DESCRIPTION	ELEVATION
N1	1	219 (8")	40	150	RFSO	152 (6")	102 (4")	485x222	OVERFLOW	1219 (4'-0")
N2	1	114 (4")	40	150	RFSO	381 (15")	51 (2")	-	STINGER C/W GATE VALVE	152 (6")
N3	1	114 (4")	40	150	RFSO	178 (7")	102 (4")	-	SPARE C/W GATE VALVE	914 (3'-0")
N4	1	114 (4")	40	150	RFSO	178 (7")	51 (2")	-	WATER OUTLET c/w INT. RISER/GATE VALVE	914 (3'-0")
N5	1	114 (4")	40	150	RFSO	178 (7")	51 (2")	-	OIL OUTLET c/w INT. RISER/GATE VALVE	914 (3'-0")
C1	1	51 (2")	-	3000	FULL CPLG	FULL	-	-	LOW LEVEL SHUT DOWN	2210 (7'-3")
C2	1	19 (3/4")	-	3000	FULL CPLG	HALF	-	-	GAS TREE CONN.	1842 (6'-1/2")
C4a	1	19 (3/4")	-	3000	FULL CPLG	HALF	-	-	TEMP GAUGE	1778 (5'-10")
C4b	1	19 (3/4")	-	3000	FULL CPLG	HALF	-	-	TEMP GAUGE	2743 (9'-0")
C5	1	102 (4")	-	3000	FULL CPLG	HALF	-	-	VENT C/W GOOSENECK	-
C6	1	25 (1")	-	3000	FULL CPLG	HALF	-	-	SAMPLE CONN.	-
C7	1	25 (1")	-	3000	FULL CPLG	HALF	-	-	SAMPLE CONN. c/w REM. INT. C.S. SAMPLE LINE TO 4'	1092 (3'-7")
C8	1	25 (1")	-	3000	FULL CPLG	HALF	-	-	SAMPLE CONN. c/w REM. INT. C.S. SAMPLE LINE TO 6'	1092 (3'-7")
C9	1	25 (1")	-	3000	FULL CPLG	HALF	-	-	SAMPLE CONN. c/w REM. INT. C.S. SAMPLE LINE TO 8'	1092 (3'-7")
C10	1	25 (1")	-	3000	FULL CPLG	HALF	-	-	SAMPLE CONN. c/w REM. INT. C.S. SAMPLE LINE TO 10'	1092 (3'-7")
C11	1	38 (1 1/2")	-	3000	FULL CPLG	HALF	-	-	LEVEL INDICATOR	-
C12a,b	2	38 (1 1/2")	-	3000	FULL CPLG	HALF	-	-	FLOAT GUIDE WIRES	-
FT	1	273 (10")	-	-	FAB'D	152 (6")	6 (1/4")	-	FIRETUBE	1524 (5'-0")
TH	1	219 (8")	40	FAB'D	FAB'D	203 (8")	6 (1/4")	-	THEIF HATCH	-
EV	1	1524x1829 (5x6)	N/A	N/A	N/A	N/A	6 (1/4")	-	ENVIROVAULT c/w LOCKABLE DOORS	-
M1	1	610x1220 (2'x4')	-	FAB'D	FAB'D	SEE DET. "C"	SEE DET. "C"	-	SHELL MANWAY	-

BILL OF MATERIAL				
MARK	QTY	COMPONENT DESCRIPTION	MATERIAL	WT
1	1	FLOOR: PLATE 6.35mm (1/4") THK. x 4763mm (15'-7 1/2") DIA.	G40.21-44W	
2	1	ROOF: PLATE 4.76mm (3/16") THK. x 4648mm (15'-6") DIA.	G40.21-44W	
3	1	SHELL: PLATE 6.35mm (1/4") THK. x 2438mm (8'-0") x 14623mm (47'-11 11/16") LG.	G40.21-44W	
4	2	SHELL: PLATE 4.76mm (3/16") THK. x 2438mm (8'-0") x 14618mm (47'-11 3/4") LG.	G40.21-44W	
6	1	GROUNDING LUG ATMI-STD-002 (REFER TO DWG#ATMI-STD-100-01)	G40.21-44W	
7	2	INSULATION PROTECTOR PADS ATMI-STD-005 (REFER TO DWG#ATMI-STD-100-01)	G40.21-44W	
8	4	HAULING PADS ATMI-STD-004 (REFER TO DWG#ATMI-STD-100-01)	G40.21-44W	
9	4	LIFTING LUGS ATMI-STD-001 (REFER TO DWG#ATMI-STD-100-01)	G40.21-44W	
10	1	TAILING LUG ATMI-STD-003 (REFER TO DWG#ATMI-STD-100-01)	G40.21-44W	
11	1	NAMEPLATE C/W BRACKET ATMI-STD-006 (REFER TO DWG#ATMI-STD-100-01)	G40.21-44W	
12	1	SHELL MANWAY c/w 2'-0" x 4'-0" COVER ATMI-STD-009 (REFER TO DWG#ATMI-STD-100-01)	G40.21-44W	
13	1	LADDER ASSEMBLY - STRAIGHT LADDER (ATMI-STD-102-03)	G40.21-44W	
14				
15	1	FIRETUBE REMOVABLE U-TUBE 273.1mm# (10") SCH. STD. -219.1mm# STACK (ATMI-STD-101-02)	G40.21-44W	
16	1	THEIF HATCH NOZZLE c/w HAWKEYE T-200 THEIF HATCH SET @ 8 oz. PRESSURE & 0.4 oz. VACUUM(REFER TO ATMI-STD-008)	G40.21-44W	
17	1	FIRETUBE HOLD DOWN BAR (3/4" BENT ROD)	G40.21-44W	
18	1	LEVEL INDICATOR 3M ARM GAUGING SYSTEM c/w FLOAT, GALVANIZED METAL BOARD 120 0-30 RED (CUBIC METERS) & HARDWARE	G40.21-44W	
19	1	C100x8 CHANNEL FIRETUBE SUPPORT	G40.21-44W	
20	1	STACK BRACKET FOR 219.1mm# (8") STACK (ATMI-STD-101-02)	G40.21-44W	
22	3	TANK ROOF SAFETY HARNESS LUG REFER TO (REFER TO ATMI-STD-007)	G40.21-44W	
23	2	FIRETUBE SUPPORT REPAD 4.76mm (3/16") THK. x 152mm (6") DIA.	G40.21-44W	
24	1	BURNER BOX 762mm (30") x 610mm (24") x 254mm (10") FOLD DOWN		

**MANUFACTURER'S NOTES:**

- VAULT DRESS-UP
  - 4" GATE VALVES
  - CAM & CAP
  - 1/2" SCREEN
  - 2" DRAW UP ON N3
  - 0-30 RED GAUGE BOARD
  - NO BLIND FLANGES
  - 12" BCD BURNER FLANGE
- COVER ALL OPEN NOZZLES /COUPLINGS
- SHIP LOOSE ITEMS
  - STD DOOR BOLT/GASKET KIT
  - 4" THREADED GOOSE NECK
  - STRAIGHT LADDER

TOTAL WEIGHT:

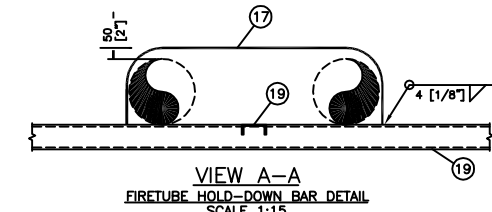


MK	ELEV.
C6	788 (2'-7")
C7	2439 (8'-0")
C8	1219 (4'-0")
C9	1524 (5'-0")
C10	3048 (10'-0")

**SAMPLE POINT RISER DETAILS**  
(TYP. AT ALL SAMPLERS WITH INTERNAL RISERS & C/W STREET 90's ON TOP)

**DETAIL "B"**  
NTS

**DETAIL "A"**



- NOTES:**
- ALL DIMENSIONS ARE IN MILLIMETERS. DIMENSIONS IN BRACKETS ARE IMPERIAL CONVERSIONS FOR SHOP REFERENCE ONLY.
  - ALL NOZZLE PROJECTIONS GIVEN ARE ALONG THE NOZZLE CENTERLINE.
  - FLANGE AND BOLT HOLES TO STRADDLE THE NOZZLE CENTERLINES OF TANKS.
  - ATM INSPECTION LEVEL 1.
  - INSIDE OF ENVIROVAULT DOOR TO BE INSULATED.

CUSTOMER SPECIFICATIONS		
DESIGN CODE: MODIFIED API 12F	EXTERNAL:	
OPERATING PRESSURE: ATMOSPHERE	INTERNAL:	LIMITED TO AIR TESTING AS PER API 12F CODE
DESIGN TEMPERATURE: OIL, WATER, GAS (SWEET)	INSULATION:	APPLY MIN. 51mm (2") URETHANE FOAM SPRAY, SEAL WITH 15mils DFT BLACK ELASTOMERIC SEALER.
SERVICE: CORROSION ALLOWANCE: NONE	OTHER:	

**CAUTION : READ BEFORE CONSTRUCTION**

ALTHOUGH ALL DIMENSIONS ARE BELIEVED TO BE ACCURATE, CONTRACTOR SHALL VERIFY ALL DIMENSIONS PRIOR TO FABRICATION. CONTRACTOR IS TO NOTIFY PROJECT MANAGER IMMEDIATELY WITH REGARDS TO ANY DISCREPANCIES, ERRORS OR OMISSIONS. DESIGN IS NOT TO BE ALTERED WITHOUT PRIOR WRITTEN INSTRUCTION BY THE PROJECT ENGINEER.

REFERENCE DRAWINGS	DWG. NO.	NO.	DATE	PROJECT DESCRIPTION	EWR No.	EPCM Co.	EPCM No.	ENG.
STANDARD DETAILS	ATMI-STD-100-01	0	-	-	-	ATMI	-	JWB

ISSUE STAGE	DATE	BY	CHKD.	APPD.	PERMIT STAMP	ENGINEER'S STAMP
Prelim.	-	-	-	-		
Approval	10/09/16	-	JWB	JWB		
Tender	-	-	-	-		
Const.	-	-	JWB	JWB		
As-Built	-	-	-	-		

**CALROC INDUSTRIES**

EPCM CO. \_\_\_\_\_ EPNO. \_\_\_\_\_

DATE: 2012-11-15 SCALE: 1:30 (A1 Size)

TITLE: 750bbi SALE TANK C/W STRAIGHT LADDER ORIENTATION & ELEVATION

AREA: \_\_\_\_\_ FILE NO.: CALROC-750-CALR-02B